



OCTOBER 2025

Hello Everyone,

Following late winter rains across much of eastern Australia, spring has sprung spectacularly. Exuberant flowering of everything from ground flora to forest species is a major feature of this season with plentiful soil moisture.

The absence of honeybees (*Apis mellifera*) in much of NSW, however, is a real shock. A kind of Silent Spring!

We are so accustomed to the ample presence of these bees, that the silence is almost deafening. Of course one's attention immediately takes in the native bees, mostly quite tiny, but they do not buzz.

Yes, the Varroa mite has made its presence dramatically felt, and most beekeepers have watched helplessly as their colonies have died out. The widespread presence of (opportunistic) Small Hive Beetle has certainly contributed to this rapid decline.

Hope is in the air, though. Varroa-resistant strains will be discovered and reproduced at scale. Just how soon is the burning question. Effective and reasonably cheap organic treatments are already available.

So hope is on all fronts.

Good growing,



Farewell my darlings: a beekeeper's lament...and hope

John Hodgkinson

My dear bees, I am sorry.

Seventy years of association with the European honeybee (*Apis mellifera*) for me came to a sad end this week when my last remnant-of-a-strong colony absconded. No doubt to cling as a small swarm to some Bellingen bush and make a futile attempt to find a new home, as swarm critical mass needs to be substantially greater for successful colonisation. And that's without the new parasites.

Beautifully, and now achinglly cached are my childhood memories of Arnie Weiss's hives at the back of our 900 acre Matheson soldier settler farm near Glen Innes in the early 1950's, his extracting van parked off the Kings Plains road, the smell of his smoker and the magical and unforgettable night-time hive aroma in the nectar flow season, then the luscious taste of yellow box honey from the 60lb tin he paid us in rent for the site each year.

These latest hives were the last of my six hyper-productive - and much loved- colonies to vote against Small Hive Beetle (SHB) and varroa mite with their weary and demoralised little bodies. The last few thousand I left quietly and unseen as I went about my Biodynamic Agriculture Aust daytime duties, leaving behind all their sealed brood, now-unattended larvae, accumulated pollen and ample winter honey stores.

How do I cope with the feeling of impotence and loss, tinged with a sense of failure?

What epitaph can I manifest to pay homage and express my gratitude to all those beings for which I was responsible? Maybe this love-lament will suffice.

Read more....



Key biodynamic spray dates

OCTOBER 2025

[Note that this strongly vitalising influence is “in orb” for up to 12 hours either side of the opposition time. It is believed that spraying out biodynamic soil preparations (late afternoon) and atmospheric preparations (early morning) back-to-back reinforces the balance between the Moon’s calcium influence and Saturn’s silica influence, giving pasture and crops greater resilience to weather extremes, diseases and pests.]

October 7.10am

Moon descending periods

[This is the recommended/usual soil spraying time, when the Moon’s influence is working below the soil surface.]

October 26th – November 8th

Moon ascending periods

This is the recommended/usual time to spray out the atmospheric preparations when the Moon’s influence is more above the soil.

October 12th – 26th

Sequential spraying dates to encourage rain

[To encourage rain, consider buying a *Rain Plus Kit*. A series of four soil and atmospheric sprays are put out over three successive days when the Moon is in a water sign and preferably near Full Moon.] The best sequential spraying dates for October 2025:

October 6th-8th

Order a Rain Plus Kit in time to spray out on the dates suggested above.

Please allow seven days for postage.

Read more...



Fabulous 500!

Our wonderful volunteers John and Bridget retrieved 500 last week and what a glorious batch it is.

Biodynamic Horn Manure (500) is the original biodynamic soil spray and made from fresh cow manure, buried in cow horns over winter. It is a powerful soil activator helping root development and growth of the plant as well as humus formation in the soil.

This soil spray needs to be alternated with the atmospheric sprays to obtain the maximum biodynamic effect.

<https://biodynamics.net.au/product/horn-manure-500/>



Biodynamic Horn Manure (500)

Biodynamic Horn Manure (500) is the original biodynamic soil spray and is made from fresh cow manure, buried in cow horns over winter. It is a powerful soil activator helping root development and growth of the plant as well as humus formation in the soil.



GREAT PRICES

SIZE	FARM	GARDEN	NON MEMBER
35g	\$5.50	\$7.70	\$11.55
85g/ha	\$11.55	\$16.20	\$24.25
1kg/ha	\$114.85	\$160.80	\$241.20
10kg/kg	\$108.25	\$151.55	\$227.30

We recommend two soil sprays per year.

For maximum biodynamic effect, use with atmospheric sprays



Biodynamic Agriculture Australia Ltd

Living Soil Living Food



How manifestation works

Peter Tompkins

The link between mind and matter lies in the nature of the perception by consciousness of a world outside itself. For consciousness to unfold its potentialities as it descends from the unmanifest into manifestation, cosmic ideation is involved. Such ideation, or the projection from a state of consciousness of something outside itself, is compared to an artist creating a picture in his mind. So long as the picture is only in the mind, it remains potential; once the picture is actually drawn, it goes from the realm of the mind to that of an object. That is, it becomes manifest. Pure consciousness when it ideates and projects this manifested universe in all its different grades and infinite variety of forms is described as being present in every part of every form of the manifested universe as its basic substance, the basis of differently evolving forms. To Steiner the basic “spiritual substance” of the cosmos, his “world-ether”, is generated by the various states of consciousness of hierarchical beings from primordial spiritual “warmth”. World-ether, as it radiates down to the earth from cosmic heights is, in its essence, a thought-forming power, a manifestation, says Steiner, of the consciousness of hierarchical beings in differing levels, there being nothing in the universe but consciousness.

Tompkins, Peter, 1997, *The Secret Life of Nature*, pp. 102 & 119

Biodynamic Comfrey & Nettle Liquid Manures



Two extremely important plant tonics and preventives for the garden, orchard, vineyard, market garden and farm.

Their potency is bolstered by addition of the biodynamic compost preparations 502-507 and the use of "structured water".

These products come in two sizes for small gardens and modest horticulture settings only.

For larger situations it is best to make your own – refer to our Biodynamic Handbook for directions.



Biodynamic Agriculture Australia Ltd
www.biodynamics.net.au





We are the cure - Robert Gurlay

Everyone has their unique vibrational frequency which became a reality when our mother's egg invited our father's sperm into it. At this point, we received a unique spirit, and we gave off a flash of light to celebrate the moment of conception.

However, as we travel throughout life, we realise that our vibration does not vibe with all people. It is our understanding of our spirit energy that enables us to find a pathway to where we would like to fit in with family, community and society at large.

Eventually, we find a tribe that resonates with our spirit energy. However, it is important to regularly validate your resonating energy as this process can help you reach your highest electromagnetic potential. This potential can be represented as respect, loyalty, creativity, and cracking the code for longevity.

Read more...



2025 Astro Calendars going out the door @ \$11

Way below costs and excellent value, the Astro calendar is full of beautiful diagrams, pictures and beneficial planting information for the southern hemisphere. ***Read more....***



Asparagus officinalis

Fiona Morgan

We're in the season for asparagus! If you've got the room, these are a great perennial to grow. They can keep giving for 10 - 20 years.

Asparagus is a very low maintenance perennial who will provide platefuls of delicious seasonal treats in the early warming part of the year (spring) right in that interlude where the cool season veg are winding down and before the warm season food plants have gotten going. This will go on every year for 10 - 20 years in exchange for an annual tune up (and being put in the right spot to begin with). This is a beginner friendly plant with almost no pests or diseases. Although this is a vegetable, asparagus needs to be approached like a fruit tree. Expect to plant and invest in care for a few years before tasting any results.

Asparagus is a maritime Mediterranean-climate plant. They grow best in areas where annual daytime temperatures are within the range 15 - 30°C, but can tolerate 6 - 38°C. So they may appreciate some protection on super hot days here. They prefer a mean annual rainfall in the range 800 - 1200mm (less than this area), but thankfully they tolerate 500 - 4000mm with good drainage.

Asparagus thrives in regions with “cool winters” for dormancy. For healthy robust growth to take place, they require a dormant period of 90 - 150 days when temperatures are low. They also need a “warm spring” to trigger spear growth. Spear growth is best when the days are hot but nights are noticeably cooler. Frosts (-1°C) can damage spears, but by late August / early September when spears appear here, that shouldn't be a problem. In summary, they grow well here, with one caveat....

Read more...



MY HAPPY PLACE

Reader contribution

Have you got a special place in your garden/property that makes you feel good? We would love to see it! Use your phone camera to capture and email us your image and a brief description (no more than 20 words) to share with fellow BtLers. Unfortunately, not all submissions can be published.

The beautiful photo above comes from Ginette Van Praag. This is her block and is a dream coming together after many years. Now graded for revegetation and ready to plant!

Biodynamic Liquid Soil Activator (LSA)

A potent living biodynamic soil spray that brings a healthy balance to the soil.

Contains biodynamic preparations: (500–508)

No stirring required – just dilute and apply.

USES

Broadacre

- pastures and crops, as both a soil and foliar spray
- via stock – pour into water troughs at recommended dilution so that stock can spread over large and/or inaccessible areas

Gardens and Market Gardens

- as a soil spray prior to planting seedlings
- for vegetable gardens, flower beds and pot plants
- for green manure crops to aid breakdown when turned-in
- as a seed bath or root dip before transplanting
- add to liquid fertilisers such as biodynamic fish or seaweed concentrate
- add to water used in compost making
- add to septic tanks and composting toilets to cancel odours and improve microbial breakdown
- add to watering can and sprinkled over worm farm or home composting container

DILUTION [dilution ratio: 1:100]

1 litre LSA in 100 litres water *is sufficient for 3ha*

330ml LSA in 33 litres water *is sufficient for 1ha*

100ml LSA in 10 litres water *is sufficient for 3000m²*

30ml LSA in 3 litres water *is sufficient for 1000m²*
(quarter acre)

METHOD

Shake LSA container, then add appropriate volume for the correct dilution, into sprayer/ spray tank water. Fish/seaweed products can be added at the same time and sprayed out together with LSA. Spray out in droplets for soil spray; mist for foliar spray. It is best to spray after about 3pm or after the heat of the day has subsided.

FREQUENCY

Spray out monthly but at least twice a year at active growing times, especially after rain or during drought.

STORAGE

Store in a cool dry dark place as far away as possible from electrical fields and appliances.



Biodynamic Agriculture Australia Ltd

Order online: www.biodynamics.net.au

WORKSHOPS



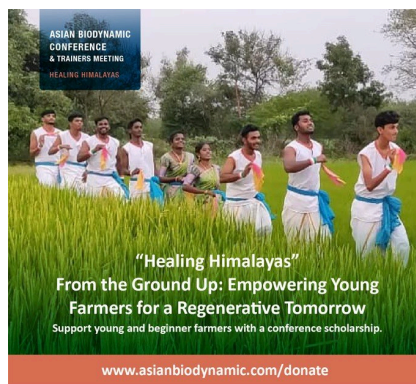
SEKEM-Festival 2024

SEKEM-Festival goes into the second round! After the premiere of the SEKEM-Festival 2024 in Fulda, we will meet this year in Austria, in Graz. Here, too, there are many SEKEM friends who support the vision in their local environment with great commitment.

Once again, we want to create a joint work: Organised by SEKEMers from Egypt, Austria and Germany, we are looking forward to the participation and co-creation of many SEKEM friends from all over the world.

When: 10-12 October 2025

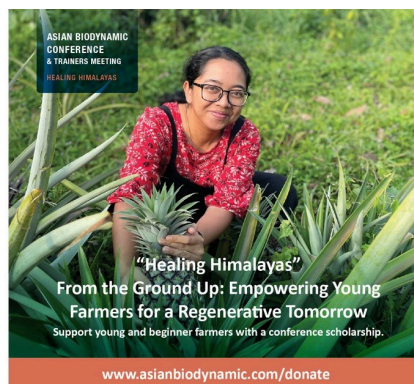
Where: Graz, Austria



Enquiry
healinghimalayas2025@gmail.com

Goetheanum
Agriculture

BIODYNAMIC
FEDERATION



Enquiry
healinghimalayas2025@gmail.com

Goetheanum
Agriculture

BIODYNAMIC
FEDERATION



Enquiry
healinghimalayas2025@gmail.com

Goetheanum
Agriculture

BIODYNAMIC
FEDERATION

Introduction to biodynamic agriculture

The Himalayas, the lifeblood of Asia, are facing a critical threat. Their ecological foundations, farmland, and glacial lakes are disappearing at an alarming rate. This raises a fundamental question: how can biodynamic agriculture, a holistic and regenerative

farming approach, provide cross-cutting solutions to transform our food systems and heal our land?

We invite farmers, researchers, biodynamic initiatives and associations, local multipliers, and key stakeholders from the food and agricultural sector to join us at the Asian Biodynamic Conference “Healing Himalayas.” Together, we will explore synergies and collaborations that can shape the future of agriculture in Asia.

When: Friday, 31st October to Saturday, 1st November, 2025

[Learn more...](#)

Biodynamic preparation making workshop

This workshop will be led by Eduardo Rincon in collaboration with regional trainers, and it is limited to 30 BD practitioners or those who have attended an Introduction to biodynamics session.

When: Sunday, November 2nd to Tuesday, November 4th, 2025

Where: Tanahun, Nepal

[Learn more...](#)

Asia biodynamic trainers and multipliers meeting

When: Tuesday, November 4th to Wednesday, November 5th, 2025 (am only)

Where: Pokhara, Nepal

For more information and to register, please contact: **paz.bernaschina@demeter.net**

Asian Biodynamic Conference 2025

When: Thursday, November 6th to Sunday, November 9th, 2025

Where: Pokhara, Nepal

[Learn more...](#)



Nourishing Australia

How soil health affects the climate and human health

When: 8.30am-5pm AEDT Saturday 1 November

Where: Guthrie Theatre, UTS Building 6, Ultimo, NSW, Aust

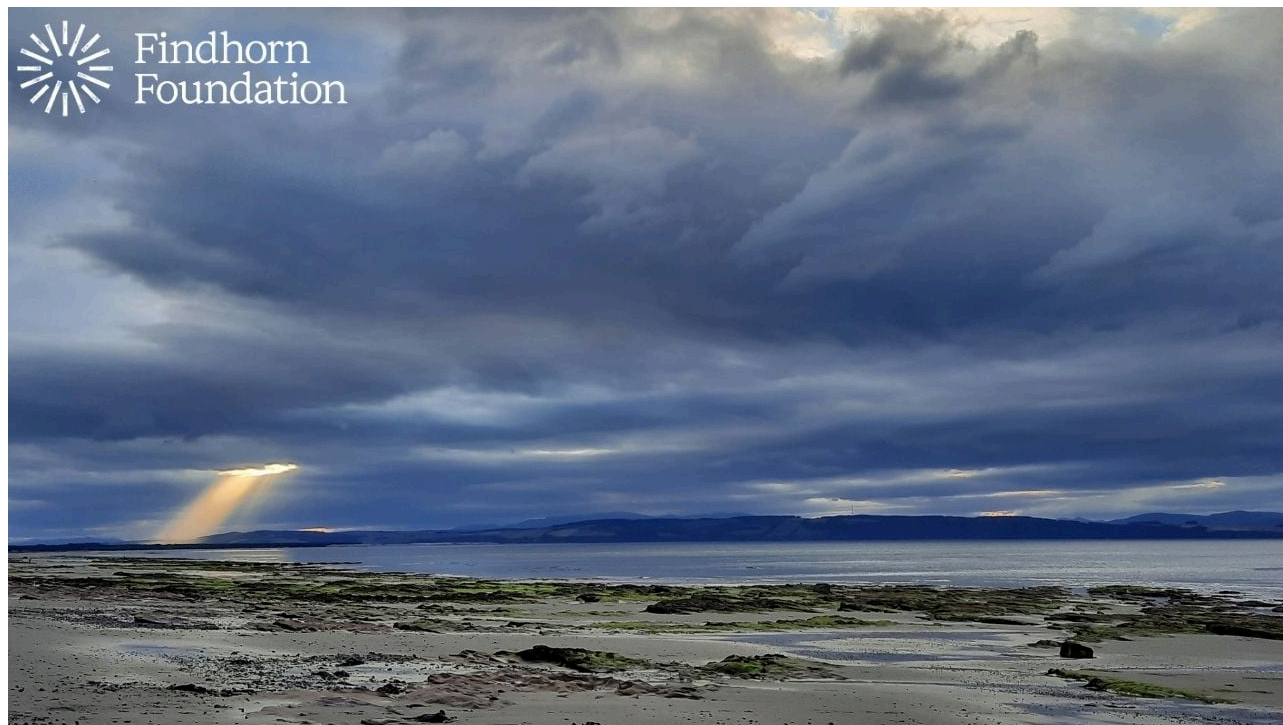
Are you concerned about health and climate change?

Our day of ground-breaking talks and panels will explore how nature and regenerative farming - including grazing livestock - may hold the key!

Join leading scientists, regenerative farmers, and changemakers for a powerful one-day journey into nature and the **hidden forces shaping the climate, your food, your health, and the future** - and the role of **corporate interests in dictating our choices**

We will highlight the importance of going **back to nature** including the magic of **the sun** and **the small water cycle** - created when healthy soil absorbs the rain where it falls, stores the water, hydrates and cools the land and releases it via plants to form clouds and normal rain. **Bare ground creates unhealthy soil** and can lead to droughts, floods, fires and erosion and the **need for chemicals to grow food** which of course affects our health.

Learn more...



Keep your eye on the light

When things appear to be going wrong in your lives and you find yourselves up against difficulties, learn from every difficulty, every trial and tribulation, and know with that deep inner knowing that you have important lessons to learn. Learn them quickly and do not try to resist them or try to run away from them.

See the very best in everything that is happening to you. Keep your eye on the Light no matter how much darkness there may appear to be around you. Draw nearer and nearer to the Light until you are completely immersed in it and there is no longer any darkness, for the darkness cannot withstand the Light.

Be grateful for every experience in life which draws you ever closer to Spirit, no matter how devastating that experience may appear to be at the time. Good comes out of everything. Open your eyes and see this come about. Look for the best and see the best come out of every situation. Put your whole faith and trust in Spirit.

Guidance received by Eileen Caddy, the Findhorn Foundation.



Biodynamic Agriculture Australia

PO Box 54, Bellingen NSW
Australia

You received this email because you signed up on our website or made a purchase from us.

[Unsubscribe](#)
